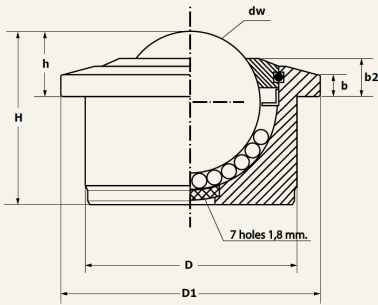


SERIES “SPM-CARGO” FOR AIRPORT APPLICATIONS

BODY MADE OF SOLID MACHINED ZINC PLATED CARBON OR STAINLESS STEEL.  
HOUSING MADE OF ZINC PLATED STEEL WITH SEALING COATING TO INCREASE CORROSION RESISTANCE.  
WITHOUT OILED FELT SEALING TO GUARANTEE HIGHEST FLUENCY IN ALL WOKING CONDITIONS  
STAINLESS STEEL DISC WITH SEVEN DRAIN HOLES TO FAVOUR THE DRAINING OF POWDER, IMPURITES,...  
WORKING TEMPERATURE: -50°C -+100° C.  
SPECIALLY DESIGNED TO ALLOW LONG LIFE USE AND CORROSION RESISTANCE TO PARTICULAR APPLICATIONS, SUCH AS EXTREME OUTDOORS CONDITIONS (RAIN, SNOW, ICE AND DUST).



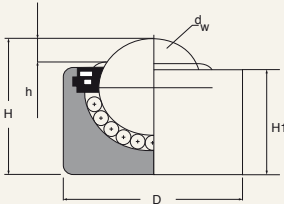
TYPE	Features	Dw	D	Tol	D1	h	Tol	H	b2	Kg Loading Capacity	Kg Weight
SPM 30 C-Cargo	ZINC PLATED MACHINED BODY AND STAINLESS STEEL BALLS AISI 420	30	45	±0,08	55	13,8	±0,3	36,8	8,5	350 / 240	0,355
SPM 45 C-Cargo		45	62	±0,1	75	19	±0,4	53,5	10	600 / 420	0,990
SPM 30 SS-Cargo	BODY AND BALLS IN STAINLESS STEEL AISI 420	30	45	±0,08	55	13,8	±0,3	36,8	8,5	240 / 170	0,355
SPM 45 SS-Cargo		45	62	±0,1	75	19	±0,4	53,5	10	400 / 280	0,990

Load Up Load Down



SERIES “SBM” HEAVY DUTY WITHOUT COLLAR

SOLID MACHINE BODY STEEL BALLS AISI 52100. SELF CLEANING HOLE INCORPORATED



TYPE	Features	Dw	D	A	h	H	Tol	Kg Loading Capacity	Kg Weight
SBM 12 B D=20	ZINC PLATED MACHINED BODY AND STEEL BALLS	12	20	±0,065	3	16,5	±0,2	28	0,028

Only Load Up

